



# **Arima High Coverage HiC Kit**

User Guide for Nucleated Blood

8 reactions

Material Part Number: A410110

Document Part Number: A160177 v01

Release Date: November 2021

This product is intended for research use only. This product is not intended for diagnostic purposes.

This document and its contents are proprietary to Arima Genomics, Inc ("Arima Genomics"). Use of this document is intended solely for Arima Genomics customers for use with the Arima High Coverage HiC Kit, PN A410110, and for no other purpose. This document and its contents shall not be used, distributed or reproduced in whole or in part and/or otherwise communicated or disclosed without the prior written consent of Arima Genomics.

This user manual must be read in advance of using the product and strictly followed by qualified and properly trained personnel to ensure proper use of the Arima High Coverage HiC kit. Failure to do so may result in damage to the product, injury to persons, and/or damage to other property. Arima Genomics does not assume any liability resulting from improper use of its products or others referenced herein.

U.S. Patent No. US 9,434,985 pertains to the use of this product.

#### TRADEMARKS

Illumina<sup>®</sup>, MiSeq<sup>®</sup>, NextSeq<sup>®</sup>, HiSeq<sup>®</sup>, and NovaSeq<sup>™</sup> are trademarks of Illumina, Inc.

AMPure<sup>®</sup> is a trademark of Beckman Coulter, Inc.

Qubit<sup>®</sup> is a trademark of Molecular Probes, Inc.

SSIIbio<sup>®</sup> is a trademark of Scientific Specialties, Inc.

Bio-Rad<sup>®</sup> is a trademark of Bio-Rad Laboratories, Inc.

Fisher Scientific<sup>®</sup> is a trademark of Fisher Scientific Company, LLC.

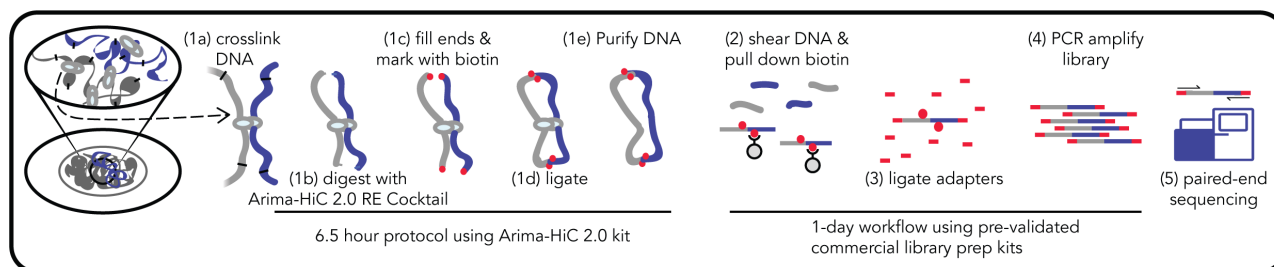
© 2021, Arima Genomics, Inc. All rights reserved.

## Revision History

Document	Date	Description of Change
<b>Material Part Number:</b> A410110 <b>Document Part Number:</b> A160177 v00	June 2020	Initial Release
<b>Material Part Number:</b> A410110 <b>Document Part Number:</b> A160177 v01	November 2021	Changed Arima-HiC 2.09 to Arima High Coverage HiC

# Table of Contents

Introduction.....	5-6
Arima High Coverage HiC Quick Reference Protocol .....	7
Arima High Coverage HiC Kit Contents and Storage Info .....	8
Getting Started .....	9-11
Crosslinking.....	12-13
Estimating Input Amount .....	14-15
Arima High Coverage HiC Protocol .....	16-18
Arima-QC1 Quality Control.....	19
Warranty and Contact Info .....	20-21



## 1.1 Arima High Coverage HiC Workflow Overview

Arima High Coverage HiC is an experimental workflow that captures the sequence and structure (three-dimensional conformation) of genomes. As illustrated in the Arima High Coverage HiC workflow schematic above, chromatin from a sample source (tissues, cell lines, or blood) is first crosslinked to preserve the genome sequence and structure. The crosslinked chromatin is then digested using a restriction enzyme (RE) cocktail optimized for coverage uniformity across a wide range of genomic sequence compositions. The 5'-overhangs are then filled in, causing the digested ends to be labeled with a biotinylated nucleotide. Next, spatially proximal digested ends of DNA are ligated, capturing the sequence and structure of the genome. The ligated DNA is then purified, producing pure proximally-ligated DNA. The proximally-ligated DNA is then fragmented, and the biotinylated fragments are enriched. The enriched fragments are then subjected to a **custom** library preparation protocol utilizing a range of supported commercially available library prep kits. Depending on the choice of library prep kit, a separate Arima High Coverage HiC Library Prep user guide is provided that contains a custom protocol for converting proximally-ligated DNA to Arima High Coverage HiC libraries.

## 1.2 Sequencing and Data Analysis

Arima High Coverage HiC libraries are sequenced via Illumina® sequencers in “paired-end” mode. The resulting data is referred to as Arima High Coverage HiC data. The tools necessary for analyzing Arima High Coverage HiC data depend on the application. For example, for studying 3D genome conformation, Arima High Coverage HiC data can be processed using publicly available tools such as Juicer (Durand, 2016a) or Hi-C Pro (Servant, 2015), and genome organizational features such as compartments, TADs, and loops can be identified and visualized using tools such as Juicebox (Durand, 2016b). These tools require usage modifications and/or custom input files that are specific to Arima High Coverage HiC data, so please contact Technical Support for assistance implementing these tools. Additionally, because paired-end reads of Arima High Coverage HiC data can originate from distal sequences along the linear genome, these data capture short- and long-range DNA contiguity information that is valuable for applications such as *de novo* assembly, genome scaffolding, and haplotype phasing. Therefore, Arima High Coverage HiC data can be mapped to contigs/unitigs using our mapping pipeline (<https://github.com/ArimaGenomics>) or Juicer, and then the contigs/unitigs can be scaffolded using tools such as SALSA (Ghurye, 2019) or 3D-DNA (Dudchenko, 2017). Lastly, because the Arima High Coverage HiC data provides uniform per base genome coverage while maintaining the highest long-range contiguity signal, it uniquely benefits

analyses such as variant discovery, base polishing, scaffolding, and phasing. Please contact Technical Support for more information.

# Arima High Coverage HiC Quick Reference Protocol



Kit P/N: A410110  
Doc P/N: 160426  
Date: June 2020

## Arima High Coverage HiC Quick Reference Protocol



### Crosslink Sample



Resuspend cells in 20 $\mu$ L **Lysis Buffer** OR nuclei in 20 $\mu$ L water<sup>1</sup>  
Incubate 15 min. At 4°C



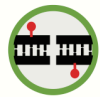
Add 24 $\mu$ L **Conditioning Solution**  
Incubate 10 min. at 62°C



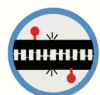
Add 20 $\mu$ L **Stop Solution 2**  
Incubate 15 min. at 37°C



Add 7.5 $\mu$ L **Buffer F** + 1.5 $\mu$ L **Enzyme F1** + 1.5 $\mu$ L **Enzyme A2** + 1.5 $\mu$ L  
**Enzyme F3** + 1.5 $\mu$ L **Enzyme F4**  
Incubate 60 min. at 37°C followed by 20 min. at 65°C



Add 12 $\mu$ L **Buffer G** + 4 $\mu$ L **Enzyme B**  
Incubate 45 min. at 25°C



Add 70 $\mu$ L **Buffer C** + 12 $\mu$ L **Enzyme C**  
Incubate 15 min. at 25°C



Add 10.5 $\mu$ L **Buffer D** + 25 $\mu$ L **Enzyme D**  
Add 20 $\mu$ L **Buffer E**  
Incubate 30 min. at 55°C followed by 90 min. at 68°C



### Purify DNA

Proceed to library prep using the unique protocol  
outlined in the User Guide

<sup>1</sup> If nuclei have been isolated prior to lysis step (e.g. from plant tissue, FAC-sorted nuclei)

[arimagenomics.com](http://arimagenomics.com)

# Arima High Coverage HiC Kit Contents and Storage Info



Kit P/N: A410110  
Doc P/N: 160426  
Date: June 2020

## Arima High Coverage HiC Box Contents & Storage Info

Box A		
Component	Cap	Storage
Stop Solution 1		20 to 25°C
Elution Buffer		
Wash Buffer*		
Conditioning Solution		
Stop Solution 2		
Buffer D		
Buffer E		

Box B		
Component	Cap	Storage
Lysis Buffer		-20°C
Buffer F		
Enzyme F1		
Enzyme A2		
Enzyme F3		
Enzyme F4		
Buffer G		
Enzyme B		
Buffer C		
Enzyme C		
Enzyme D		

Box C		
Component	Cap	Storage
Enrichment Beads*		2 to 8°C
QC Beads**		

\* Required for library prep using the Arima-HiC 2.0 Library Preparation user guide.

\*\* Required for Arima-QC1. QC Beads are not interchangeable with Enrichment Beads.

[arimagenomics.com](http://arimagenomics.com)



# Getting Started

## 2.1 Handling and Preparation

- Several steps during the *Arima High Coverage HiC Protocol* require preparation of a master mix. Sufficient reagent has been included in the kit to make master mixes with 10% excess volume. Use the master mix calculation tables provided.
- When handling reagents, room temperature (RT) is defined as 20 to 25°C.
- If the *Arima High Coverage HiC Protocol* is performed in PCR plates or PCR tubes, ensure to have a total volume capacity of at least 320µL. See Section 2.2 for recommended PCR plates and PCR tubes. Also, ensure that plates and/or tubes are compatible with thermal cyclers and other required equipment. Using seals and caps for PCR plates and tubes is required.
- All kit reagents should be fully thawed and thoroughly mixed before use.
- **Stop Solution 1**, **Conditioning Solution**, and **Buffer D** from **Box A** may contain precipitates. If present, these precipitates must be dissolved before use. Heating these reagents at 37°C for 5-15 minutes may be necessary to dissolve precipitates.
- **Enzyme D** may contain precipitates. If present, these precipitates must be dissolved before use. Heating these reagents at 37-42°C for 5-10 minutes may be necessary to dissolve precipitates.
- During handling and preparation, reagents from **Box A** should be kept at RT.
- During handling and preparation, reagents from **Box B** should be kept on ice, except for **Enzyme D**, which should be kept on ice but warmed to room temperature just before use.
- Enzyme solutions from **Box B** are viscous and require special attention during pipetting.

## 2.2 User-supplied reagents, consumables, and equipment checklist

- ☐ Freshly prepared **Resuspension Buffer** (see Section 2.3 for recipe)
- ☐ 1X PBS, pH 7.4 (e.g. Fisher Scientific® Cat # 50-842-949)
- ☐ 37% Formaldehyde (e.g. Fisher Scientific® Cat # F79-500)
- ☐ Freshly prepared 80% Ethanol
- ☐ DNA Purification Beads (e.g. Beckman Coulter Cat # A63880)
- ☐ Qubit® Fluorometer, dsDNA HS Assay Kit and consumables (e.g. Thermo Fisher Scientific Cat # 32851, 32856)
- ☐ Liquid Nitrogen or dry ice
- ☐ 15mL conical tubes
- ☐ 1.7mL microcentrifuge tubes, PCR tubes (e.g. SSIbio® Cat # 3247-00), or PCR plates (e.g. Bio-Rad® Cat # HSS9641) and magnetic rack compatible with tube selection.
- ☐ Centrifuge

- Thermal cycler (if performing Arima High Coverage HiC in PCR tubes or PCR plate)
- Thermomixer (if performing Arima High Coverage HiC in 1.7mL microcentrifuge tubes)
- Fetal Bovine Serum (e.g. Fisher Scientific® Cat # A3160501)

## 2.3 Buffer Recipes

**Resuspension Buffer** – The **Resuspension Buffer** must be prepared fresh directly before use in the *Crosslinking* protocol. The following recipe is enough for crosslinking 8 samples. This recipe should be scaled accordingly if more or less than 8 samples are processed simultaneously. If using a 16% formaldehyde stock, please contact Technical Support for a different **Resuspension Buffer** formulation. The table below includes a *suggested* vendor and catalog number for each reagent. After the **Resuspension Buffer** is prepared, store at 4°C until use.

Reagent	Stock Vendor	Stock Cat #	Stock Concentration	Final Concentration	Stock Amount
PBS	Fisher Scientific®	50-842-949			54.45mL
FBS	Fisher Scientific®	A3160501	100%	1%	550µL
				<b>Total</b>	<b>55mL</b>

## 2.4 Optimal read length, sequencing depth, and number of Arima High Coverage HiC reactions per sample

Arima High Coverage HiC libraries must be sequenced in paired-end mode, and are compatible with most Illumina® sequencing machines (e.g. MiSeq®, NextSeq®, HiSeq®, NovaSeq™) and a variety of read lengths. We generally recommend 2x150bp read length on the HiSeq® or NovaSeq™ instruments to optimize for sequencing throughput and Arima High Coverage HiC data alignment quality, although shorter read lengths (e.g. 2x50bp, 2x100bp) and lower throughput instruments can certainly be used for certain applications of Arima High Coverage HiC data such as 3D genome conformation analysis and genome scaffolding. For applications such as base polishing, genomic variant discovery, or haplotype phasing, 2x150bp read length is strongly recommended to maximize the performance of the data.

The optimal sequencing depth for Arima High Coverage HiC libraries also depends on the application. For studying 3D genome conformation, the ability to detect certain genome organization features depends on the sequencing depth. For ~3Gb genomes such as mouse and human, we generally recommend obtaining at least 600 million read-pairs *per biological condition* for high-resolution analyses of A/B compartments, TADs, and chromatin loops. One way of obtaining at least 600 million read-pairs is by combining at least 300 million read-pairs from 2 biological replicates. In doing so, you will be able to assess the overall reproducibility of the Arima High Coverage HiC data across replicates, and then used the combined replicate Arima High Coverage

HiC dataset for high-resolution chromatin conformation analyses. Alternatively, one can obtain at least 600 million read-pairs *per biological replicate* and then use the common set of identified genome conformational features across replicates as a “high confidence” set of structural features supported by their observation in both replicates. For lower resolution analyses of A/B compartments and TADs, we generally recommend obtaining at least 300 million read-pairs per biological condition. For help estimating the optimal sequencing depth for different genome sizes or analysis goals, please contact Technical Support.

For applications such as *de novo* assembly and genome scaffolding, the required sequencing depth can vary depending on the quality of contig/unitigs that are being scaffolded using Arima High Coverage HiC data. For a 3Gb genome, we recommend obtaining up to 600M read-pairs, as this is the amount of sequencing that is currently utilized from Arima-HiC libraries for genome scaffolding by the Vertebrate Genome Project (VGP) consortia. The amount of sequencing required scales linearly with the genome size (e.g. up to 200M read-pairs for a 1Gb genome).

For applications such as base polishing, genomic variant discovery, or haplotype phasing, we recommend sequencing to at least 30X depth using a 2x150bp read length.

Lastly, it is important to note that each Arima High Coverage HiC library should pass the Arima-QC2 assay and be evaluated for library complexity prior to deep sequencing. As a general rule, each Arima High Coverage HiC library should be complex enough to sequence up to ~600M read-pairs without reaching saturation. If >600M read-pairs of Arima High Coverage HiC data are needed, it may be more efficient to sequence a second Arima High Coverage HiC library than sequence deeper into the first Arima High Coverage HiC library.

## 2.5 How to cite Arima High Coverage HiC in publications

When citing the Arima High Coverage HiC protocol or kit, one may write: “Hi-C data was generated using the Arima High Coverage HiC kit, according to the manufacturers protocols”. Please reference the catalog number found on the kit packaging.

# Crosslinking

**Input:** Whole nucleated blood in ethanol

**Output:** Crosslinked nucleated blood cells

**Before you begin:** The Arima High Coverage HiC workflow for nucleated blood begins with washing of ethanol-preserved nucleated blood, followed by crosslinking. The protocol assumes one knows how much *whole blood* (in  $\mu\text{L}$ ) was originally collected and then preserved in ethanol. Less than  $25\mu\text{L}$  of whole nucleated blood (i.e. not the volume of the ethanol diluted blood) is typically needed for a single Arima High Coverage HiC reaction, but we recommend crosslinking  $25\mu\text{L}$  of whole nucleated blood if sufficient blood is available. For example in Step 2 below, if  $50\mu\text{L}$  of whole blood was collected in  $1\text{mL}$  of ethanol, then  $500\mu\text{L}$  of the ethanol diluted blood would be used for crosslinking because it contains the equivalent of  $25\mu\text{L}$  of whole nucleated blood. Lastly, we recommend performing all centrifugation steps for 5 min at  $2000 \times G$ .

1. Prepare Resuspension Buffer and **1X PBS**. Chill buffers on ice until cold.
2. If only using a portion of whole blood preserved in ethanol for crosslinking, resuspend the whole blood in ethanol mixture thoroughly by pipetting and transfer a portion to a new  $1.5\text{mL}$  tube for crosslinking and proceed to the next step. With the remaining blood and ethanol mixture, freeze on dry ice or liquid nitrogen and store at  $-80^{\circ}\text{C}$ .
3. Pellet cells by centrifugation and remove supernatant.
4. Resuspend pellet in  $1\text{mL}$  **Resuspension Buffer**.
5. Pellet cells by centrifugation and remove supernatant.
6. Resuspend pellet in  $1\text{mL}$  **Resuspension Buffer**, and transfer to a  $15\text{mL}$  conical tube.
7. Add  $4\text{mL}$  **Resuspension Buffer**, bringing the total volume to  $5\text{mL}$ .
8. Add  $286\mu\text{L}$  of **37% formaldehyde**, bringing the final formaldehyde concentration to 2%.
9. Mix well by inverting 10 times and incubate at RT for 10 min.
10. Add  $460\mu\text{L}$  of **Stop Solution 1**, mix well by inverting 10 times and incubate at RT for 5 min.
11. Place sample on ice and incubate for 15 min.
12. Pellet cells by centrifugation and remove supernatant.
13. Resuspend cells in  $1\text{mL}$  **1X PBS**.
14. To prepare for the *Estimating Input Amount* protocol in the following section, mix the sample by inversion and then immediately aliquot sample such that 1 aliquot contains 10% of the sample, while the rest of the aliquots each contain the equivalent of ~20-25%

of the sample. Mix sample by inversion between aliquots to ensure all aliquots are equally homogeneous.

\* The 10% aliquot will be used in the *Estimating Input Amount* protocol. The remaining 3 aliquots containing 20-25% are meant to be saved as sample material for the *Arima High Coverage HiC Protocol*.

15. Pellet cells in all aliquots by centrifugation and remove supernatant leaving only the crosslinked cell pellet and no residual liquid.
16. Freeze samples on dry ice or liquid nitrogen, and store at -80°C until ready to proceed to the *Estimating Input Amount* protocol in the following section.

# Estimating Input Amount

**Input:** 10% aliquot of crosslinked nucleated blood cells

**Output:** Purified genomic DNA

**Before you begin:** The *Estimating Input Amount* protocol is required if one does not know how many crosslinked cells will comprise 500ng-5µg of DNA, and if sufficient cells are available to perform this protocol. Arima High Coverage HiC reactions are optimally performed on crosslinked cells comprising ~500ng-5µg of DNA. The *Estimating Input Amount* protocol measures the amount of DNA obtained from 10% of the crosslinked cells, which guides the calculation of the optimal cellular input for an Arima High Coverage HiC reaction. The Arima High Coverage HiC kit contains enough reagents to perform this protocol on 8 samples. This protocol concludes with a descriptive example of how to estimate the optimal amount of crosslinked cells to use per Arima High Coverage HiC reaction.

**Note:** Step 2 requires addition of several reagents in the same step. These reagents should be combined into master mixes with 10% excess volume before use.

1. Thaw the aliquot containing 10% of the crosslinked cells prepared during the *Crosslinking* protocol.
2. Add 209.5µL of a master mix containing the following reagents:

Reagent	Volume per reaction	10% extra		# reactions		Final
Elution Buffer	174µL	191.4µL	x	2	=	382.8µL
● Buffer D	10.5µL	11.55µL	x	2	=	23.1µL
● Enzyme D	25µL	27.5µL	x	2	=	55µL
<b>Total</b>	<b>209.5µL</b>					<b>460.9µL</b>

3. Add 20µL of ● **Buffer E**, mix gently by pipetting, and incubate as follows. If using a thermal cycler, set the lid temperature to 85°C.

Temperature	Time
55°C	30 min.
68°C	90 min.
4°C	∞

**Note:** DNA Purification Beads (e.g. AMPure® XP Beads) should be warmed to RT and thoroughly mixed before use. The DNA Purification Beads are a *user-supplied reagent* and should not be mistaken for the Enrichment Beads or QC Beads provided in the Arima High Coverage HiC kit.

4. Add 150µL of **DNA Purification Beads**, mix thoroughly, and incubate at RT for 5 min.
5. Place sample against magnet, and incubate until solution is clear.
6. Discard supernatant. While sample is still against magnet, add 400µL of 80% ethanol, and incubate at RT for 1 min.
7. Discard supernatant. While sample is still against magnet, add 400µL of 80% ethanol, and incubate at RT for 1 min.
8. Discard supernatant. While sample is still against magnet, incubate beads at RT for 3 – 5 min. to air-dry the beads.
9. Remove sample from magnet, resuspend beads thoroughly in 20µL of **Elution Buffer**, and incubate at RT for 5 min.
10. Place sample against magnet, incubate until solution is clear, and transfer supernatant to a new tube.
11. Quantify sample using Qubit®. The total DNA yield corresponds to the amount of DNA obtained from 10% of the crosslinked cells.
12. Estimate how much crosslinked nucleated blood cells to use per Arima High Coverage HiC reaction. See the example description below:

**Example:** In the following *Arima High Coverage HiC Protocol*, it is recommended to use crosslinked cells corresponding to at least 500ng of DNA per Arima High Coverage HiC reaction, but no more than 5µg of DNA. If 250ng of DNA was obtained from 10% of the crosslinked cells as calculated in step 11, one can estimate that at least 20% of the original crosslinked cells should be used per Arima High Coverage HiC reaction (~500ng of DNA). More crosslinked cells should be used if available, as long as the total DNA per reaction is not more than 5µg. If possible, we recommend aiming to use crosslinked cells comprising 3µg of DNA per Arima High Coverage HiC reaction. Additionally, please note that the crosslinked cell pellet for one Arima High Coverage HiC reaction should occupy no more than 20µL of volume in the sample tube. If the crosslinked cell pellet comprises 500ng-5µg of DNA but occupies greater than 20µL of volume, aliquot the cells into multiple Arima High Coverage HiC reactions such that the sum of the DNA input from all reactions is at least 500ng and each cell pellet occupies no more than 20µL of volume, or contact Technical Support for additional guidance.

**Recommended HiC Input Amount Explanation:** The recommendation to use crosslinked cells comprising at least 500ng of DNA is only a *general* recommendation. If crosslinked cells comprising at least 500ng of DNA cannot be obtained, one should proceed with the *Arima High Coverage HiC Protocol* as described in this user guide and then use our validated low-input library prep protocol.

# Arima High Coverage HiC Protocol

**Input:** Crosslinked nucleated blood cells containing ~500ng-5µg of DNA

**Output:** Proximally-ligated DNA

**Before you begin:** The cell pellet for one Arima High Coverage HiC reaction should occupy no more than 20µL of volume and should be devoid of any residual liquid. If the cell pellet occupies greater than 20µL of volume, aliquot the cells such that the sum of the DNA input from all reactions is between 500ng-5µg and each cell pellet occupies no more than 20µL of volume, or contact Technical Support for additional guidance. Note that steps 2 – 3 require consecutive heated incubations. Make sure your thermal device(s) are set to 62°C and 37°C for these incubations. The safe stopping point in this section is after completing Step 21.

1. Resuspend one reaction of crosslinked cells in 20µL of ● **Lysis Buffer** in a tube or a well of a PCR plate, and incubate at 4°C for 15 min.
2. Add 24µL of ○ **Conditioning Solution**, mix gently by pipetting, and incubate at 62°C for 10 min. If using a thermal cycler, set the lid temperature to 85°C.
3. Add 20µL of ● **Stop Solution 2**, mix gently by pipetting, and incubate at 37°C for 15 min. If using a thermal cycler, set the lid temperature to 85°C.

**Note:** Steps 4, 6, 8 and 10 require addition of several reagents in the same step. These reagents should be combined into master mixes following the master mix tables.

4. Add 13.5µL of a master mix containing the following reagents:

Reagent	Volume per reaction	10% extra		# reactions		Final
● Buffer F	7.5µL	8.25µL	x	2	=	16.5µL
● Enzyme F1	1.5µL	1.65µL	x	2	=	3.3µL
● Enzyme A2	1.5µL	1.65µL	x	2	=	3.3µL
● Enzyme F3	1.5µL	1.65µL	x	2	=	3.3µL
● Enzyme F4	1.5µL	1.65µL	x	2	=	3.3µL
<b>Total</b>	<b>13.5µL</b>					<b>29.7µL</b>



5. Mix gently by pipetting, and incubate as follows. If using a thermal cycler, set the lid temperature to 85°C. Note that there are sequential incubations at different temperatures:

Temperature	Time
37°C	60 min.*
65°C	20 min.
25°C	10 min.

\* To provide flexibility in the workflow, this incubation can be held overnight at 37°C using a thermal cycler or thermomixer with a heated lid to prevent evaporation.

6. Add 16µL of a master mix containing the following reagents:

Reagent	Volume per reaction	10% extra		# reactions		Final
● Buffer G	12µL	13.2µL	x	2	=	26.4µL
● Enzyme B	4µL	4.4µL	x	2	=	8.8µL
<b>Total</b>	<b>16µL</b>					<b>35.2µL</b>

7. Mix gently by pipetting, and incubate at room temperature (RT) for 45 min.

8. Add 82µL of a master mix containing the following reagents:

Reagent	Volume per reaction	10% extra		# reactions		Final
● Buffer C	70µL	77µL	x	2	=	154µL
● Enzyme C	12µL	13.2µL	x	2	=	26.4µL
<b>Total</b>	<b>82µL</b>					<b>180.4µL</b>

9. Mix gently by pipetting, and incubate at RT for 15 min.

**Note:** Enzyme D should be warmed to RT to prevent precipitation in the below master mix.

10. Add 35.5µL of a master mix containing the following reagents:

Reagent	Volume per reaction	10% extra		# reactions		Final
● Buffer D	10.5µL	11.55µL	x	2	=	23.1µL
● Enzyme D	25µL	27.5µL	x	2	=	55µL
<b>Total</b>	<b>35.5µL</b>					<b>78.1µL</b>

11. Add 20µL of ● **Buffer E**, mix gently by pipetting, and incubate as follows. If using a thermal cycler, set the lid temperature to 85°C.

Temperature	Time
55°C	30 min.
68°C	90 min.
25°C*	10 min.*

\* To provide flexibility, this incubation can also be held overnight at 4°C. *Do not* incubate at 68°C for longer than 90 min. unless doing so using a thermal cycler with a heated lid.

**Note:** DNA Purification Beads (e.g. AMPure® XP Beads) should be warmed to RT and thoroughly mixed before use. The DNA Purification Beads are a *user-supplied reagent* and should not be mistaken for the Enrichment Beads or QC Beads provided in the Arima High Coverage HiC kit.

12. Add 100µL of **DNA Purification Beads**, mix thoroughly, and incubate at RT for 5 min.
13. Place sample against magnet, and incubate until solution is clear.
14. Discard supernatant. While sample is still against magnet, add 300µL of 80% ethanol, and incubate at RT for 1 min.
15. Discard supernatant. While sample is still against magnet, add 300µL of 80% ethanol, and incubate at RT for 1 min.
16. Discard supernatant. While sample is still against magnet, incubate beads at RT for 3 – 5 min. to air-dry the beads.
17. Remove sample from magnet, resuspend beads thoroughly in 100µL of **Elution Buffer**, and incubate at RT for 5 min.
18. Place sample against magnet, incubate until solution is clear, and transfer supernatant to a new tube.
19. Quantify sample using Qubit®.

**Note:** If the proximally-ligated DNA yield is less than 275ng, we recommend skipping the Arima-QC1 assay mentioned in Step 20 and described in the following *Arima-QC1 Quality Control* section, and strongly recommend performing the Arima-QC2 assay described in our *Arima High Coverage HiC Library Preparation* user guide for low input samples.

20. Transfer 75ng of sample into a new tube labelled “Arima-QC1”, and add **Elution Buffer** to Arima-QC1 to bring the volume to 50µL. The “Arima-QC1” sample should now contain 75ng of proximally-ligated DNA in 50µL of **Elution Buffer**. Store at -20°C until use in the following *Arima-QC1 Quality Control* protocol.
21. Store all remaining samples at -20°C until ready to proceed to library preparation following an accompanying *Arima High Coverage HiC Library Preparation* user guide.

# Arima-QC1 Quality Control

**Before you begin:** The following protocol quantifies the fraction of proximally-ligated DNA that has been labeled with biotin, and is a quality control metric after completing the *Arima High Coverage HiC Protocol* but before proceeding to library preparation. The *Arima-QC1 Quality Control* protocol involves using **QC Beads** to enrich an aliquot of proximally-ligated DNA, which is then quantified using a Qubit® fluorometer. Unlike standard Qubit® readings which involve quantifying a transparent unobstructed DNA sample, the Arima-QC1 value is obtained by quantifying DNA that is still bound to the **QC Beads**. This protocol can be performed in either plates or tubes. Set your thermal device (thermal cycler or thermomixer) to hold at 55°C. After completing the *Arima-QC1 Quality Control* protocol, use the provided **Arima High Coverage HiC QC Worksheet** to determine the Arima-QC1 values.

1. If necessary, thaw the “Arima-QC1” samples prepared during Step 20 of the *Arima High Coverage HiC Protocol* in the previous section.
2. Add 50µL of ● **QC Beads**, mix thoroughly by pipetting, and incubate at RT for 15 min.
3. Place sample against magnet, and incubate until solution is clear.
4. Discard supernatant, and remove sample from magnet.
5. Wash beads by resuspending in 200µL of **Wash Buffer**, and incubate at 55°C for 2 min.
6. Place sample against magnet, and incubate until solution is clear.
7. Discard supernatant, and remove sample from magnet.
8. Wash beads by resuspending in 200µL of **Wash Buffer**, and incubate at 55°C for 2 min.
9. Place sample against magnet, and incubate until solution is clear.
10. Discard supernatant, and remove sample from magnet.
11. Wash beads by resuspending in 100µL of **Elution Buffer**.
12. Place sample against magnet, and incubate until solution is clear.
13. Discard supernatant, and remove sample from magnet.
14. Resuspend beads in 7µL of **Elution Buffer**. Proceed to next step with resuspended beads.

**Note:** The following step involves the quantification of the *bead-bound* DNA using the Qubit® dsDNA HS Assay Kit.

15. Quantify the total amount of *bead-bound* DNA using Qubit®. Use 2µL of thoroughly mixed bead-bound DNA for the Qubit® assay.
16. Determine the **Arima-QC1** value by following the **Arima High Coverage HiC QC Worksheet**. High quality Arima-QC1 values are expected to be >15%. If the Arima-QC1

value did not obtain a 'PASS' status, please contact Technical Support for troubleshooting assistance.

## Warranty and Contact Info

### WARRANTY DISCLAIMERS

THE EXPRESS WARRANTIES AND THE REMEDIES SET FORTH ABOVE ARE IN LIEU OF, AND ARIMA GENOMICS AND ITS LICENSORS, SUPPLIERS AND REPRESENTATIVES HEREBY DISCLAIM, ALL OTHER REMEDIES AND WARRANTIES, EXPRESS, STATUTORY, IMPLIED, OR OTHERWISE, INCLUDING, BUT NOT LIMITED TO, ANY WARRANTIES OF MERCHANTABILITY, SATISFACTORY QUALITY, NONINFRINGEMENT OR FITNESS FOR A PARTICULAR PURPOSE, OR REGARDING RESULTS OBTAINED THROUGH THE USE OF ANY PRODUCT OR SERVICE (INCLUDING, WITHOUT LIMITATION, ANY CLAIM OF INACCURATE, INVALID OR INCOMPLETE RESULTS), IN EACH CASE HOWEVER ARISING, INCLUDING WITHOUT LIMITATION FROM A COURSE OF PERFORMANCE, DEALING OR USAGE OF TRADE, OR OTHERWISE. TO THE MAXIMUM EXTENT PERMITTED BY APPLICABLE LAW, ARIMA AND ITS LICENSORS, SUPPLIERS AND REPRESENTATIVES SHALL NOT BE LIABLE FOR LOSS OF USE, PROFITS, REVENUE, GOODWILL, BUSINESS OR OTHER FINANCIAL LOSS OR BUSINESS INTERRUPTION, OR COSTS OF SUBSTITUTE GOODS OR SERVICES, OR FOR ANY SPECIAL, CONSEQUENTIAL, INCIDENTAL, EXEMPLARY OR INDIRECT DAMAGES FOR BREACH OF WARRANTY.

### WARRANTY

All warranties are personal to the Purchaser and may not be transferred or assigned to a third-party, including an affiliate of the Purchaser. The warranty described below excludes any stand-alone third-party goods that may be acquired or used with the Product. Arima Genomics only warrants that the kit reagents will be made and tested in accordance with Arima Genomics manufacturing and quality control processes. Arima Genomics makes no warranty that the reagents provided in this kit will work as intended by the Purchaser or for the Purchaser's intended uses. ARIMA GENOMICS MAKES NO OTHER WARRANTY, EXPRESSED OR IMPLIED. THERE IS NO WARRANTY OF MERCHANTABILITY OR FITNESS FOR A PARTICULAR PURPOSE. The warranty provided herein and the data and descriptions of Arima Genomics products appearing in Arima Genomics product literature and website may not be altered except by express written agreement signed by an officer of Arima Genomics. Representations, oral or written, which are inconsistent with this warranty or such publications are not authorized and if given, should not be relied upon.

The foregoing warranties do not apply to the extent a non-conformance is due to (i) abuse, misuse, neglect, negligence, accident, improper storage, or use contrary to the Documentation or Specifications, (ii) use that is an Excluded Use, (iii) improper handling, (iv) unauthorized alterations, (v) natural disasters, or (vi) use with a third-party's good that is not specified in the product documentation. In the event of a breach of the foregoing warranty, customer shall promptly contact Arima Genomics customer support to report the non-conformance and shall cooperate with Arima Genomics in confirming or diagnosing the non-conformance. Additionally, Arima Genomics may request return shipment of the non-conforming product at Arima Genomics cost. Arima Genomics sole obligation shall be to replace the applicable product or part thereof, provided the customer notifies Arima Genomics within 90 days of any such breach. If after exercising reasonable efforts, Arima Genomics is unable to replace the product, then Arima Genomics shall refund to the Purchaser all monies paid for such applicable product.

## CONTACT US

Technical Support: [techsupport@arimagenomics.com](mailto:techsupport@arimagenomics.com)

Order Support: [ordersupport@arimagenomics.com](mailto:ordersupport@arimagenomics.com)